

Ti-LIGHT

Light curing pattern – just smart

Ti-LIGHT is the new light curing pattern for the easy modellation of partials and the like.

Ti-LIGHT may be used even at high ambient temperatures and does not require special treatment like cooling etc. Reinforcing and finishing is done with wax as usual after curing.

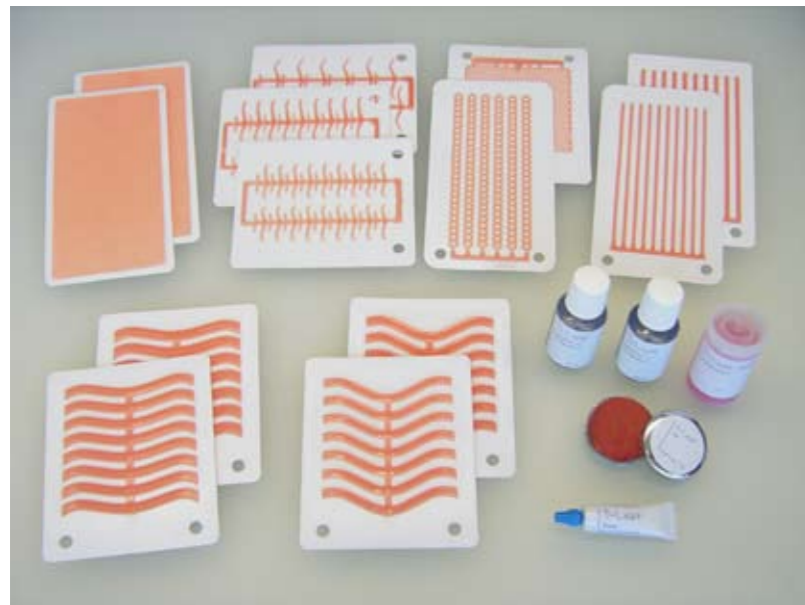
A special feature of Ti-LIGHT is the change in colour from pink to yellow while curing.

Most common light curing devices may be used for curing. The status of the curing process is easily determined visually. The light cured modellation may be lifted off for further processing like cutting, milling or grinding before casting.

Duplication and refractory models are not required any more. Time and material consumption are reduced to a minimum.

A start-up kit is available to evaluate the advanced features in daily work for various applications.

Content of the Start-up Kit:



| | |
|----------------------------|---------|
| Molar clasps | 1 sheet |
| Premolar clasps | 1 sheet |
| Anterior clasps | 1 sheet |
| Skeleton sheets | 1 sheet |
| Lower retention bands | 1 sheet |
| Stipple sheet 0.35mm | 1 sheet |
| Stipple sheet 0.55mm | 1 sheet |
| Lingual bar | 1 sheet |
| Lingual plate | 1 sheet |
| Palatal bar | 1 sheet |
| Palatal plate | 1 sheet |
| Reinforcing rods 2.3x1.3mm | 1 sheet |
| Reinforcing rods 3.0x1.5mm | 1 sheet |
| Bond (Ti-Light glue) | 5 g |
| Separator L | 20 ml |
| Separator D | 20 ml |
| Separator F | 30 ml |
| Soft, modelling material | 10 g |

Supplier:

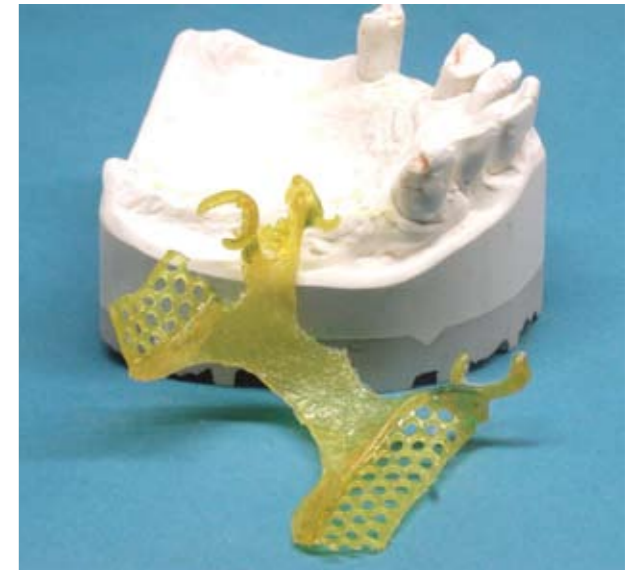
Ti-RESEARCH
Am Oberen Bühl 13
D 97350 Mainbernheim
Germany

Tel.: +49 (0)9323 80159
Fax.: +49 (0)9323 80156
email: info@ti-research.com
home: www.ti-research.com

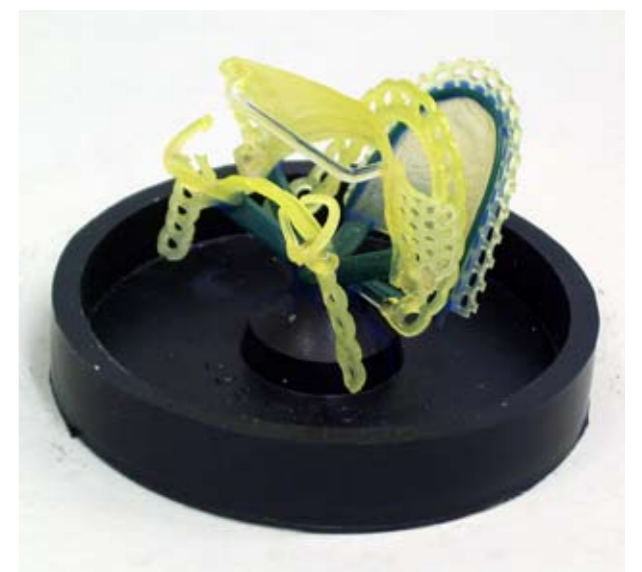
Ti-LIGHT

by Ti-RESEARCH

Light curing pattern ...



the shortcut



... to smart modellations

Ti-LIGHT by Ti-RESEARCH

Light curing pattern for efficient work



On the prepared model ...



first the lingual bar is set in place ...



then the retention is fixed ...



and completed with the clasps.



After light curing ...



just like casting.



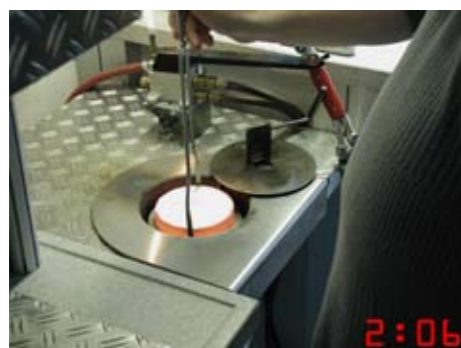
After deinvesting ...



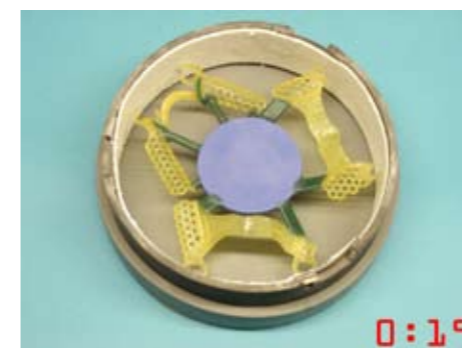
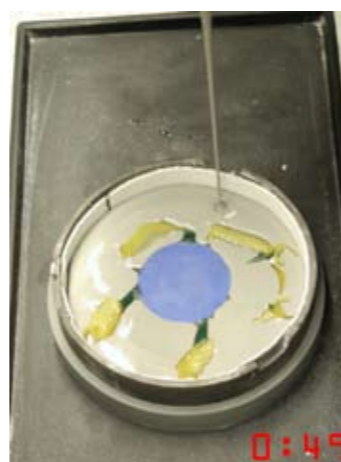
the perfect result.



final corrections may be applied with wax.



Investing and burn out is as usual ...



may be sprued alone or together with other modellations for casting.



The final modellation ...

The shortcut to perfect modellations in an instance.

Ti-LIGHT